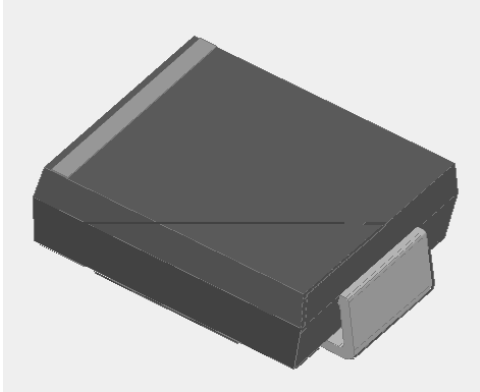
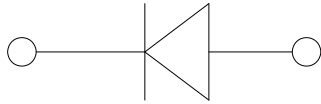


G i fZUWY' A c i b h' <] [\ '9ZZ]W]Ybh' FYWh]Z]Yf'



Hmd]WU' 5dd']WUh]cbg'

For use in high frequency rectification of power supplies, inverters, converters, and freewheeling diodes for consumer and telecommunication.



'· AYW\Ub]WU' 8UhU'

Package: DO-214AB (SMC)
Molding compound meets UL 94 V-0 flammability rating,
RoHS-compliant, halogen-free
Terminals: Tin plated leads, solderable per
J-STD-002 and JESD22-B102
Polarity: Color band denotes the cathode end

AU]a i a' FUh]b]g (T_a=25 Unless otherwise specified

D5F5A9H9F'	GMA6C@	IB-H	<G' 5	<G' 6	<G' 8	<G' :	<G' ;	<G' >	<G' ?	<G' A
Device marking code			HS3A	HS3B	HS3D	HS3F	HS3G	HS3J	HS3K	HS3M
Maximum Repetitive Peak Reverse Voltage	VRRM	V	50	100	200	300	400	600	800	1000
Maximum RMS Voltage	VRMS	V	35	70	140	210	280	420	560	700
Maximum DC blocking Voltage	VDC	V	50	100	200	300	400	600	800	1000
Average Rectified Output Current @60Hz sine wave, Resistance load, TL (FIG.1)	I _o	A	3.0							
Forward Surge Current (Non-repetitive) @60Hz Half-sine wave, 1 cycle, T _j =25	I _{FSM}	A	100							
Forward Surge Current (Non-repetitive) @1ms, square wave, 1 cycle, T _j =25			200							
Current squared time @1ms t 8.3ms T _j =25	I ² t	A ² s	41.5							
Storage temperature	T _{stg}		-55 ~ +150							
Junction temperature	T _j		-55 ~ +150							



Electrical Characteristics (Typical) $T_a=25$ Unless otherwise specified

Parameter	Symbol	Unit	Test Conditions	Min	Typ	Max
Maximum instantaneous forward voltage	V_F	V	$I_{FM}=3.0A$	1.0	1.3	1.7
Maximum reverse recovery time	t_{rr}	ns	$I_F=0.5A, I_R=1.0A, I_{rr}=0.25A$	50		75
Maximum DC reverse current at rated DC blocking voltage	I_R	μA	$T_j=25$	5		
			$T_j=125$	100		
Typical junction capacitance	C_j	pF	Measured at 1MHz and Applied Reverse Voltage of 4.0 V.D.C	60	40	24

Thermal Characteristics (Typical) $T_a=25$ Unless otherwise specified

Parameter	Symbol	Unit	Min	Typ	Max
Typical Thermal resistance	$R_{J-A(1)}$	/W	48		
	$R_{J-L(1)}$		15		
	$R_{J-C(1)}$		12		

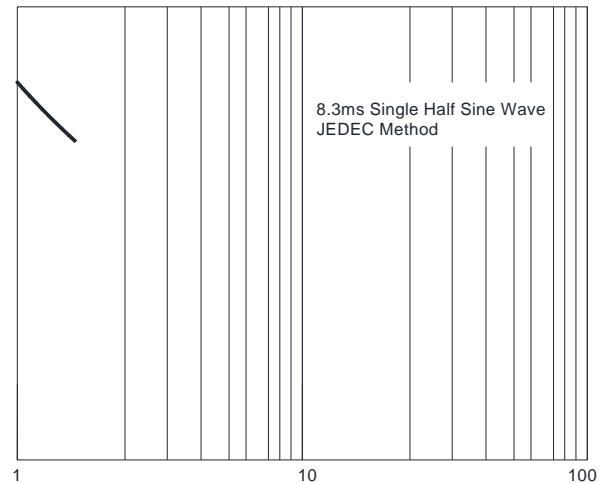
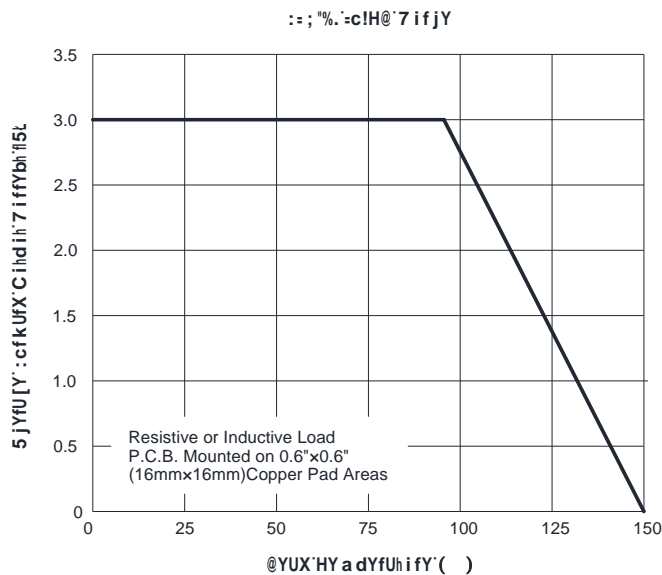
Note(1)

Thermal resistance from junction to ambient and from junction to lead mounted on P.C.B. with 0.6" x 0.6" (16 mm x16 mm) copper pad areas

Electrical Characteristics (Example)

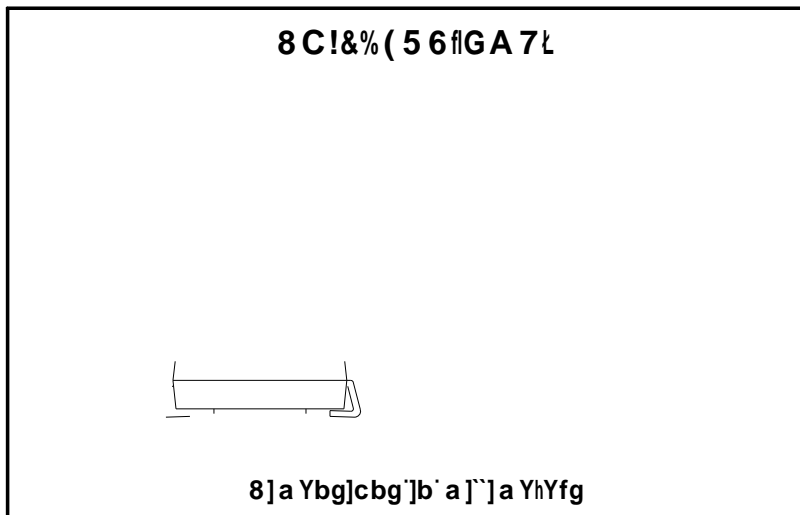
Parameter	Symbol	Unit	Min	Typ	Max
Forward current	I_F	A	3000		
Reverse current	I_R	μA	Approximate 0.248		
Forward voltage	V_F	V			
Reverse recovery time	t_{rr}	ns			
Forward power	P_F	W			
Reverse power	P_R	W			

Electrical Characteristics (Typical)





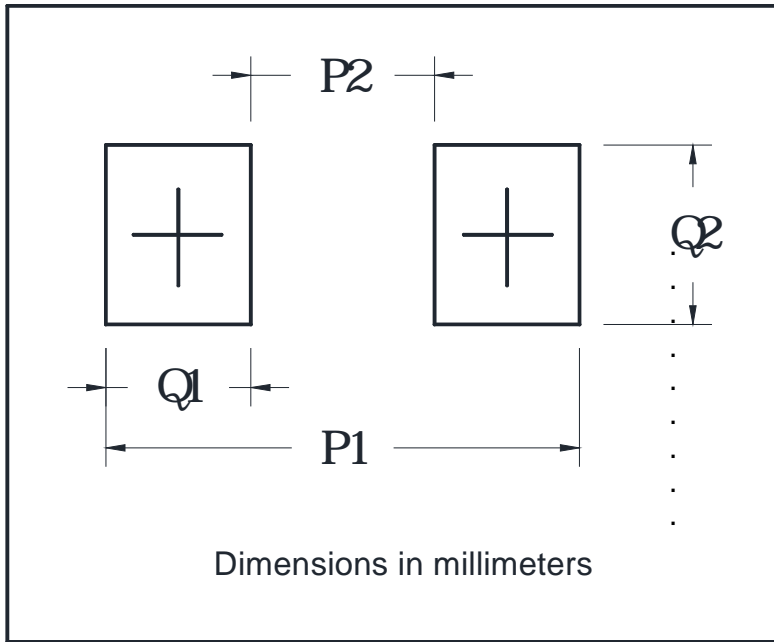
DO-214AB (SMC)



DO-214AB (SMC)		
Dim	Min	Max
A	6.60	7.11
B	2.85	3.27
C	5.59	6.22
D	7.75	8.13
E	1.99	2.61
F	0.15	0.31
G	0.76	1.52
H	0.05	0.20



YANGJIE ELECTRONIC TECHNOLOGY CO., LTD.



DIMENSIONS (MIN)	
Dim	Min
P1	9.9
P2	3.84
Q1	3.03
Q2	3.82



8]gW'U]a Yf'

The information presented in this document is for reference only. Yangzhou Yangjie Electronic Technology Co., Ltd. reserves the right to make changes without notice for the specification of the products displayed herein to improve reliability, function or design or otherwise.

The product listed herein is designed to be used with ordinary electronic equipment or devices, an ä d e" t